

Acknowledgments

Funding

The 30th Annual Data Report (ADR) of the United States Renal Data System (USRDS) was produced by the USRDS Coordinating Center at the University of Michigan Kidney Epidemiology and Cost Center (UM-KECC) in partnership with Arbor Research Collaborative for Health. Funding for the USRDS is provided by the National Institute of Diabetes and Digestive and Kidney Diseases (NIDDK), National Institutes of Health, U.S. Department of Health and Human Services, under contract HHSN276201400001C with the University of Michigan. The Centers for Medicare & Medicaid Services partners with NIDDK in supporting the USRDS.

In addition to the USRDS Coordinating Center, the NIDDK has independently funded two USRDS special study centers, one at the University of California, Irvine, in collaboration with the University of Tennessee Health Science Center and Kaiser Permanente Southern California, and the other special study center at the University of Washington, Seattle, in collaboration with Stanford University.

Contributors

Included here are the names of individuals who contributed to the 2018 ADR.

USRDS INVESTIGATORS

Director: Rajiv Saran, MD, MRCP, MS

Co-Deputy Directors: Bruce Robinson, MD, MS, FACP; Vahakn Shahinian, MD, MS

VOLUME 1. CHRONIC KIDNEY DISEASE IN THE UNITED STATES

- CH 1 CKD IN THE GENERAL POPULATION**
Jennifer Bragg-Gresham, PhD, MPH; Rajiv Saran, MD, MRCP, MS
- CH 2 IDENTIFICATION AND CARE OF PATIENTS WITH CKD**
Bruce Robinson, MD, MS, FACP; Vahakn Shahinian, MD, MS
- CH 3 MORBIDITY AND MORTALITY IN PATIENTS WITH CKD**
Kevin He, PhD, MS; Rajiv Saran, MD, MRCP, MS
- CH 4 CARDIOVASCULAR DISEASE IN PATIENTS WITH CKD**
Nicole Bhave, MD, MA; Brahmajee Nallamothu, MD, MPH; Rajiv Saran, MD, MRCP, MS

CH 5 ACUTE KIDNEY INJURY

Michael Heung, MD; Vahakn Shahinian, MD, MS

CH 6 CHAPTER 6: CKD AMONG CHILDREN AND ADOLESCENTS

Debbie Gipson, MS, MD; Zubin Modi, MD; David T Selewski, MD

CH 7 HEALTHCARE EXPENDITURES FOR PERSONS WITH CKD

Rajesh Balkrishnan, PhD; Richard A. Hirth, PhD; David Hutton; PhD, Rajiv Saran, MD, MRCP, MS

CH 8 PRESCRIPTION DRUG COVERAGE IN PATIENTS WITH CKD

Rajesh Balkrishnan, PhD; Yun Han, PhD; Richard A Hirth, PhD; David Hutton, PhD; Rajiv Saran, MD, MRCP, MS

CH 9 USRDS SPECIAL STUDY CENTER ON TRANSITION OF CARE IN CKD

Abduzhappar Gaipov, MD; Daniel Gillen, PhD; Jui-Ting Hsiung, MPH; Steven J Jacobsen, MD, PhD, MS; Kamyar Kalantar-Zadeh, MD, MPH, PhD; Carola-Ellen Kleine, MD; Csaba P Kovessy, MD; Maria V Marroquin; Miklos Z Molnar, MD, PhD; Hamid Moradi, MD; Danh V Nguyen, PhD; Keith C Norris, MD; Yoshitsugu Obi, MD, PhD; Christina Park, MPH; Praveen K Potukuchi, MS, PharmD; Connie M Rhee, MD, MSc; Sally F Shaw, DrPH, MPH; Jiaxiao M Shi, PhD; John J Sim, MD; Melissa Soohoo, MPH; Elani Streja, MPH, PhD; Keiichi Sumida, MD; Amy S You, MS; Hui Zhou, MS, PhD

VOLUME 2. END-STAGE RENAL DISEASE IN THE UNITED STATES

CH 1 INCIDENCE, PREVALENCE, PATIENT CHARACTERISTICS, AND TREATMENT MODALITIES

Hal Morgenstern, PhD; Bruce Robinson, MD, MS, FACP; Rajiv Saran, MD, MRCP, MS

CH 2 CLINICAL INDICATORS AND PREVENTIVE CARE

William Herman, MD, MPH; Ronald Pisoni, PhD, MS; Vahakn Shahinian, MD, MS

CH 3 VASCULAR ACCESS

Ronald Pisoni, PhD, MS; Rajiv Saran, MD, MRCP, MS; Douglas E Schaubel, PhD; Kenneth J Woodside, MD

- CH 4 HOSPITALIZATION**
Kevin He, PhD, MS; Jeffrey Pearson, MS; Rajiv Saran, MD, MRCP, MS
- CH 5 MORTALITY**
Keith McCullough, PhD, MS; Bruce Robinson, MD, MS, FACP; Rajiv Saran, MD, MRCP, MS; Douglas E Schaubel, PhD
- CH 6 TRANSPLANTATION**
Vahakn Shahinian, MD, MS; Kenneth J Woodside, MD
- CH 7 ESRD AMONG CHILDREN, ADOLESCENTS, AND YOUNG ADULTS**
Debbie Gipson, MS, MD; Zubin Modi, MD; David T Selewski, MD
- CH 8 CARDIOVASCULAR DISEASE IN PATIENTS WITH ESRD**
Nicole Bhave, MD, MA; Brahmajee Nallamothu, MPH, MD; Rajiv Saran, MD, MRCP, MS
- CH 9 HEALTHCARE EXPENDITURES FOR PERSONS WITH ESRD**
Rajesh Balkrishnan, PhD; Richard A Hirth, PhD; David Hutton, PhD; Rajiv Saran, MD, MRCP, MS
- CH 10 PRESCRIPTION DRUG COVERAGE IN PATIENTS WITH ESRD**
Rajesh Balkrishnan, PhD; Yun Han, PhD; Richard A Hirth, PhD; David Hutton, PhD; Rajiv Saran, MD, MRCP, MS
- CH 11 INTERNATIONAL COMPARISONS**
Jennifer Bragg-Gresham, PhD, MPH; Ronald Pisoni, PhD, MS; Bruce Robinson, MD, MS, FACP; Rajiv Saran, MD, MRCP, MS;
- CH 12 USRDS SPECIAL STUDY CENTER ON END-OF-LIFE CARE FOR PATIENTS WITH ESRD**
Sai Liu, MS, Maria Montez-Rath, PhD; Ann M O'Hare, MD, MA; and Manjula Kurella-Tamura, MD, MPH

VOLUME 3. HEALTHY PEOPLE 2020

Michael Heung, MD; Keith McCullough, PhD, MS

BIostatisticians and Research Analysts

Xue Dietrich, MS; Yun Han, PhD, MS; Yan Jin, PhD; Alissa Kapke, MS; Yiting Li, MPH; Keith McCullough, MS, PhD; Purna Mukhopadhyay, PhD; Jeffrey Pearson, MS; Kaitlyn Repeck, MS; Jillian Schragger, MPH; Monica Shieu, MPH; Diane Steffick, MA, PhD; Anca Tilea, MPH; Dongyu Wang, MS; Wenjing Weng, MS; Xin Xin, MA, MS; Maggie Yin, MA, MS, Xiaosong Zhang, MS

Information Systems & Programming Staff

Patrick Callahan, BS; Sandra Callard, MHSA; Yang Casher, MA; David Dickinson, MA; Zach Dietrich, MS; Haoyu Gu, MS, PhD; William Kreuter, MPA; Shannon Li, MS; Xizhao Li, MS; Yiting Li, MPH; Sai Liu, MPH; Purna Mukhopadhyay, PhD; Kaitlyn Repeck, MS; Diane Steffick,

MA, PhD; Anca Tilea, MPH; Megan Turf, BA; Jie Xiang, PhD, MPH

EDITORIAL, PROJECT STAFF, AND WEBSITE TEAM

Editorial: Ruth Shamraj, MA

Project Managers: Vivian Kurtz, MPH; April Wyncott, MPH, MBA; Paula Guro, BA; Aya Inoue, BA, PMP; Kiril Jakimovski, BA; Sally Shaw, DrPH

Website Team: Benjamin Guidinger, BS; Michael Lipham, DMA; Charlie Sirich, MS, MBA

Suggested Citations

The suggested citation for this report is as follows:

United States Renal Data System. 2018
USRDS annual data report: Epidemiology of kidney disease in the United States. National Institutes of Health, National Institute of Diabetes and Digestive and Kidney Diseases, Bethesda, MD, 2018.

Publications based upon data reported here or supplied upon request must include this citation and the following notice: "The data reported here have been supplied by the United States Renal Data System (USRDS). The interpretation and reporting of these data are the responsibility of the author(s) and in no way should be seen as an official policy or interpretation of the U.S. government."

The suggested citation for the AJKD e-supplement available at www.ajkd.org is:

Saran R, Robinson B, Shahinian V, et al. US Renal Data System 2018 Annual Data Report: epidemiology of kidney disease in the United States. *Am J Kidney Dis* (in press).

USRDS Coordinating Center

Director: Rajiv Saran, MD, MRCP, MS

Co-Deputy Directors: Bruce Robinson, MD, MS, FACP; Vahakn Shahinian, MD, MS

PROJECT MANAGER

Vivian Kurtz, MPH
1415 Washington Heights, Suite 3645 SPH I
Ann Arbor, MI 48109-2029
Phone 734.763.1609

DATA REQUESTS

usrds@usrds.org — Paula Guro, BA
Toll Free 1.888.99USRDS; Fax 734.763.4004

WEBSITE: WWW.USRDS.ORG
webmaster@usrds.org — Benjamin Guidinger, BS

USRDS Special Study Centers

TRANSITION OF CARE IN CKD

Principal Investigator (PI): Kamyar Kalantar-Zadeh, MD, MPH, PhD, University of California, Irvine (UCI)

Co-PIs: Csaba P Kovesdy, MD, University of Tennessee Health Science Center; Steven J Jacobsen, MD, PhD, Kaiser Permanente Southern California

END-OF-LIFE CARE FOR PATIENTS WITH ESRD

Principal Investigator: Ann M O'Hare, MD, MA, University of Washington, Seattle

Co-PI: Manjula Kurella Tamura, MD, MPH, Stanford University

USRDS Oversight

USRDS work is overseen by the Project Officers of the National Institute of Diabetes and Digestive and Kidney Diseases (NIDDK), the USRDS Steering Committee, and the USRDS External Expert Panel (EEP).

NIDDK PROJECT OFFICERS

Kevin C Abbott, MD, MPH
Director, Kidney and Urology Epidemiology Phone
301.594.7714
kevin.abbott@nih.gov

Lawrence YC Agodoa, MD
Phone 301.594.1932; Fax 301.594.9358
agodoal@extra.niddk.nih.gov

USRDS Steering Committee

The USRDS Steering Committee consists of the NIDDK project officers, the director and two co-deputy directors at the USRDS Coordinating Center, and the PIs and co-PIs at the Special Study Centers.

USRDS External Expert Panel

CHAIR

Catherine Stehman-Breen, MD, MS, Amgen, Regeneron Pharmaceuticals, Inc.

NIDDK

Kevin C Abbott, MD, MPH; Lawrence YC Agodoa, MD, Paul W Eggers, PhD

CENTERS FOR MEDICARE & MEDICAID SERVICES

Renee Dupee, PhD

EEP MEMBERS

L Ebony Boulware, MD, MPH, Duke University

M Alan Brookhart, PhD, University of North Carolina at Chapel Hill

Nilka Ríos Burrows, MPH, MT (ASCP), Centers for Disease Control and Prevention

Mahesh Krishnan, MD, MPH, MBA, FASN, DaVita Healthcare Partners Inc.

Klemens Meyer, MD, Dialysis Clinic Inc. & Tufts Medical Center

Paul Muntner, PhD, University of Alabama at Birmingham

Robert Nee, MD, Walter Reed National Military Medical Center

Keith C Norris, MD, PhD, University of California, Los Angeles

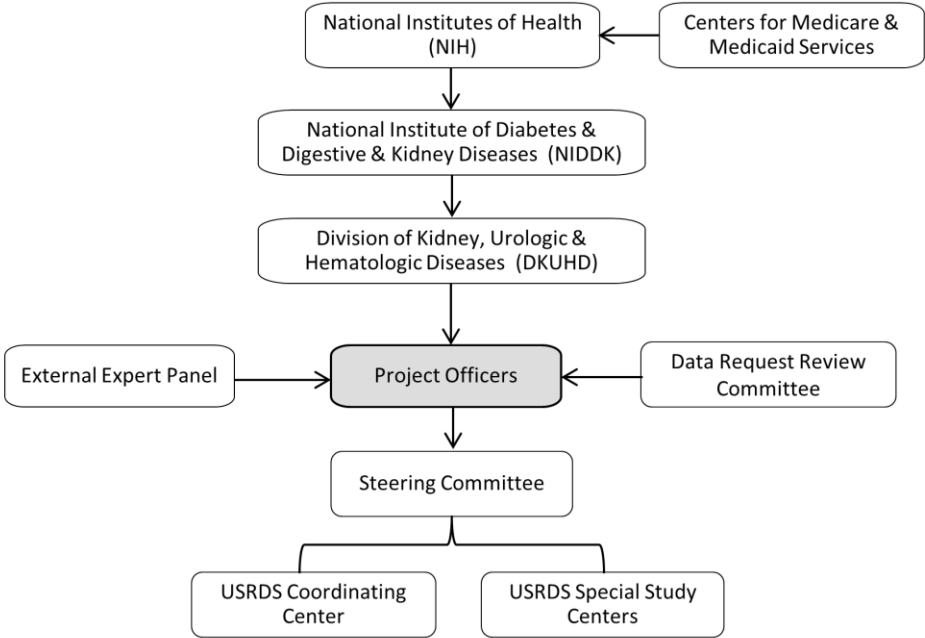
Rajiv Saran, MD, MRCP, MS, University of Michigan
Mark Schnitzler, PhD, Saint Louis University Center for Outcomes Research (SLUCOR)

Theresa I Shireman, PhD, RPh, University of Kansas Medical Center

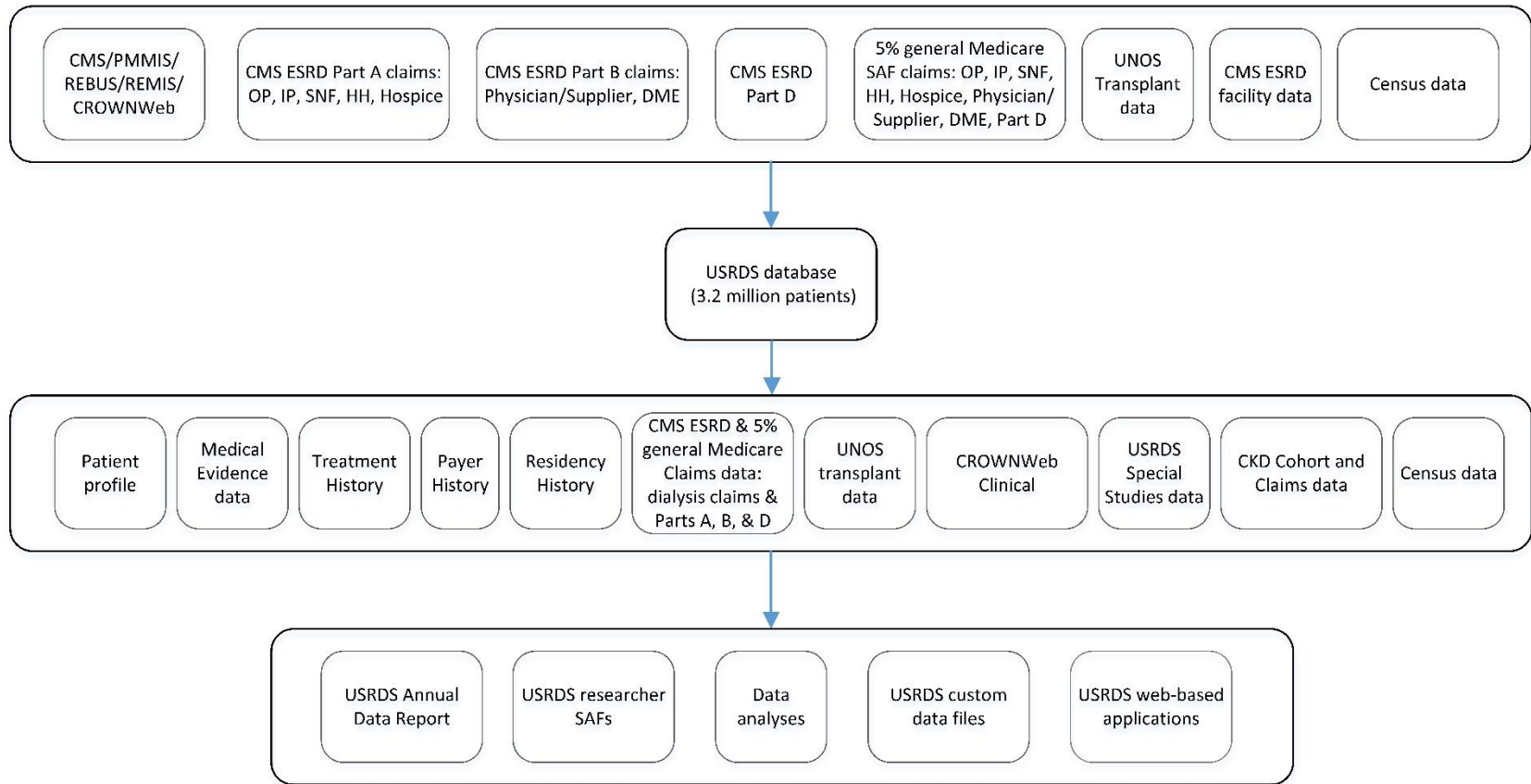
Bradley A Warady, MD, Children's Mercy Hospitals and Clinics, University of Missouri

Haimanot (Monnie) Wasse, MPH, MD, Rush University
Wolfgang C Winkelmayr, MD, MPH, ScD, FASN,
Baylor College of Medicine Yining Xie, MD, NIDDK

Administrative Oversight of theUSRDS



Structure of the USRDS Database



Disclosures

UM-KECC and Arbor Research Collaborative for Health have each enacted conflict of interest (COI) policies and practices governing the conduct of research within the USRDS and of other research not related to the USRDS. In addition to internal controls, USRDS work is overseen by the Project Officers of the National Institute of Diabetes and Digestive and Kidney Diseases (NIDDK), the USRDS Steering Committee, and the USRDS External Expert Panel.

Dr. Balkrishnan receives consulting income from Merck and Company. Dr. Bragg-Gresham is a consultant with the Medical Education Institute (MEI) involving quality-of-life performance

measures. Dr. Herman is chair of the Data Safety Monitoring Board for both Merck Sharp & Dohme. Dr. Kalantar-Zadeh has financial interests with the following entities: Abbott, Abbvie, Alexion, Amgen, Astra-Zeneca, Aveo, Chugai, DaVita, Fresenius, Genentech, Haymarket Media, Hospira, Kabi, Keryx, Novartis, Pfizer, Relypsa, Resverlogix, Sandoz, Sanofi, Shire, Vifor, UpToDate, ZS-Pharma. Dr. Csaba P. Kovesdy is a consultant for Astra-Zeneca, Bayer, Dr. Schar and Sanofi-Aventis. Dr. Morgenstern is a consultant at Arbor Research Collaborative for Health. Dr. Sim has investigator-initiated research grants from Keryx Pharmaceuticals, Malinckrodt Pharmaceuticals, and Otsuka Pharmaceuticals. The other authors declare that they have no relevant financial interests.